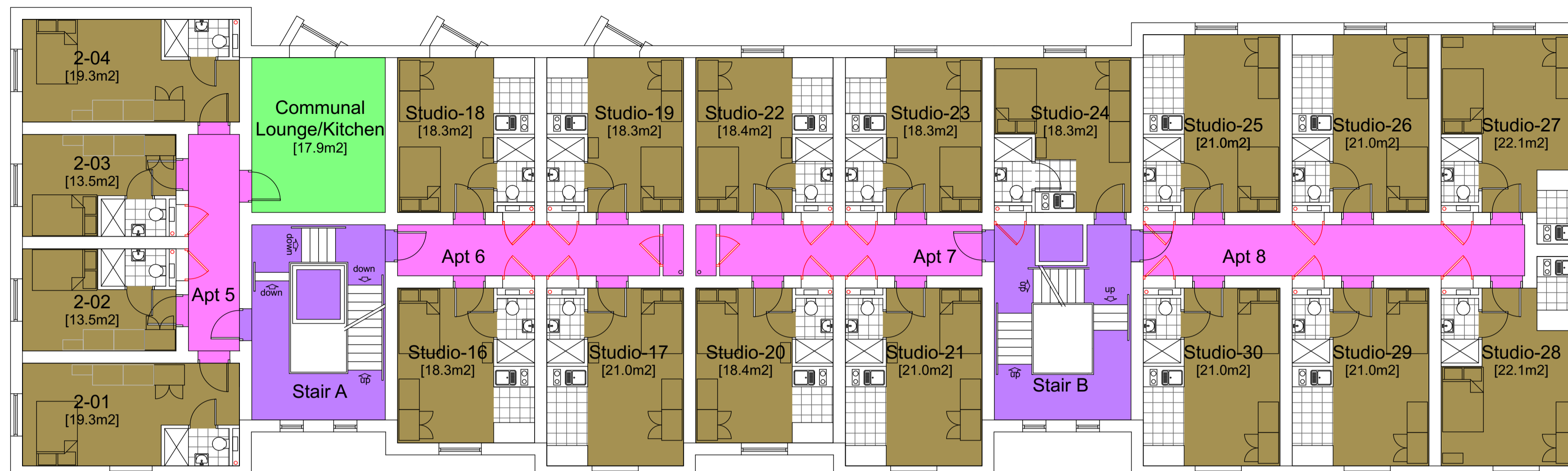


Approx room areas shown in [brackets]

New Apartments Area Schedule

Floor	Room Name	Area m <sup>2</sup>
First	2-01	19.3
First	2-02	13.5
First	2-03	13.5
First	2-04	19.3
First	Communal Lounge/Kitchen	17.9
First	Studio-16	18.3
First	Studio-17	21.0
First	Studio-18	18.3
First	Studio-19	18.3
First	Studio-20	18.4
First	Studio-21	21.0
First	Studio-22	18.4
First	Studio-23	18.3
First	Studio-24	18.3
First	Studio-25	21.0
First	Studio-26	21.0
First	Studio-27	22.1
First	Studio-28	22.1
First	Studio-29	21.0
First	Studio-30	21.0



FIRST FLOOR ACCOMMODATION

15 nr self-contained Studio Apartments

1 nr Cluster Apartments with 4 bedrooms including communal areas for each Cluster.

Rev	Gross External Area
A	509.39 m <sup>2</sup>
C	592.78 m <sup>2</sup>

PROPOSED FIRST FLOOR PLAN

Areas shown in [brackets] are Approx Gross Internal Floor Areas

New Apartments Area Schedule

Floor	Room Name	Area m <sup>2</sup>
Ground	1-01	19.3
Ground	1-02	13.5
Ground	1-03	13.5
Ground	1-04	19.3
Ground	Communal Lounge/Kitchen	17.9
Ground	Studio-01	18.3
Ground	Studio-02	21.0
Ground	Studio-03	18.3
Ground	Studio-04	18.3
Ground	Studio-05	18.4
Ground	Studio-06	21.0
Ground	Studio-07	18.4
Ground	Studio-08	18.3
Ground	Studio-09	18.3
Ground	Studio-10	21.0
Ground	Studio-11	21.0
Ground	Studio-12	22.1
Ground	Studio-13	22.1
Ground	Studio-14	21.0
Ground	Studio-15	21.0



GROUND FLOOR ACCOMMODATION

15 nr self-contained Studio Apartments

1 nr Cluster Apartments with 4 bedrooms including communal areas for each Cluster.

Rev	Gross External Area
A	506.74 m <sup>2</sup>
C	590.13 m <sup>2</sup>

PROPOSED GROUND FLOOR PLAN

Areas shown in [brackets] are Approx Gross Internal Floor Areas

© Copyright CR&A Limited  
**NOTES**  
 Do not scale this drawing.  
 All dimensions to be checked and verified on site.  
 This drawing is to be read in conjunction with all other relevant drawings and specifications.  
 Any discrepancies in the drawings are to be reported immediately to Christopher Rodgers.  
 This drawing is not to be used for construction or sales purposes unless marked 'issued for construction'.  
 Dimensions and area schedules are subject to change.

Rev	By	Date	Description
C	MH	Aug 16	Addition of self-contained apartments.
A	MH	Jul 15	Reposition gable windows to Apts 2 01, 2 04, 4 01 and 4 04 to suit altered roof gable to planning officer comments and letter dated 06.07.15
#	MH	May 15	Planning application submission
P6	MH	Mar 15	Revisions following Pre-application enquiry consultations with the planning officer
P5	MH	Feb 15	Design development
P4	MH	Feb 15	Design development
P3	MH	Jan 15	Design development
P2	MH	Jan 15	Alternative preliminary design
P1	MH	Jan 15	Preliminary design

Client:  
**Kingscrown Properties Limited**

Project:  
**Proposed Student Accommodation at Euston road, Bangor Gwynedd, LL57 2YP**

Drawing:  
**Proposed Ground and First Floor Plans**

Project No:	Drawing No:	Revision:
<b>1109</b>	<b>04</b>	<b>C</b>

Issue:  
**PLANNING APPLICATION**

Scale: 1:100 @ A1; 1:200 @ A3 Drawn: MH  
 Date: January 2015 Checked: CR

**CHRISTOPHER RODGERS**

Project Management • Architecture • Quantity Surveying

CR&A Limited, Suite A9, Allied Business Centre  
 Potter Place, Skelmersdale, WN8 9PW  
 Tel: 07710 560133  
 e-mail: c.rodgers@christodgers.co.uk

CR&A Limited Registered in England and Wales No. 7070122